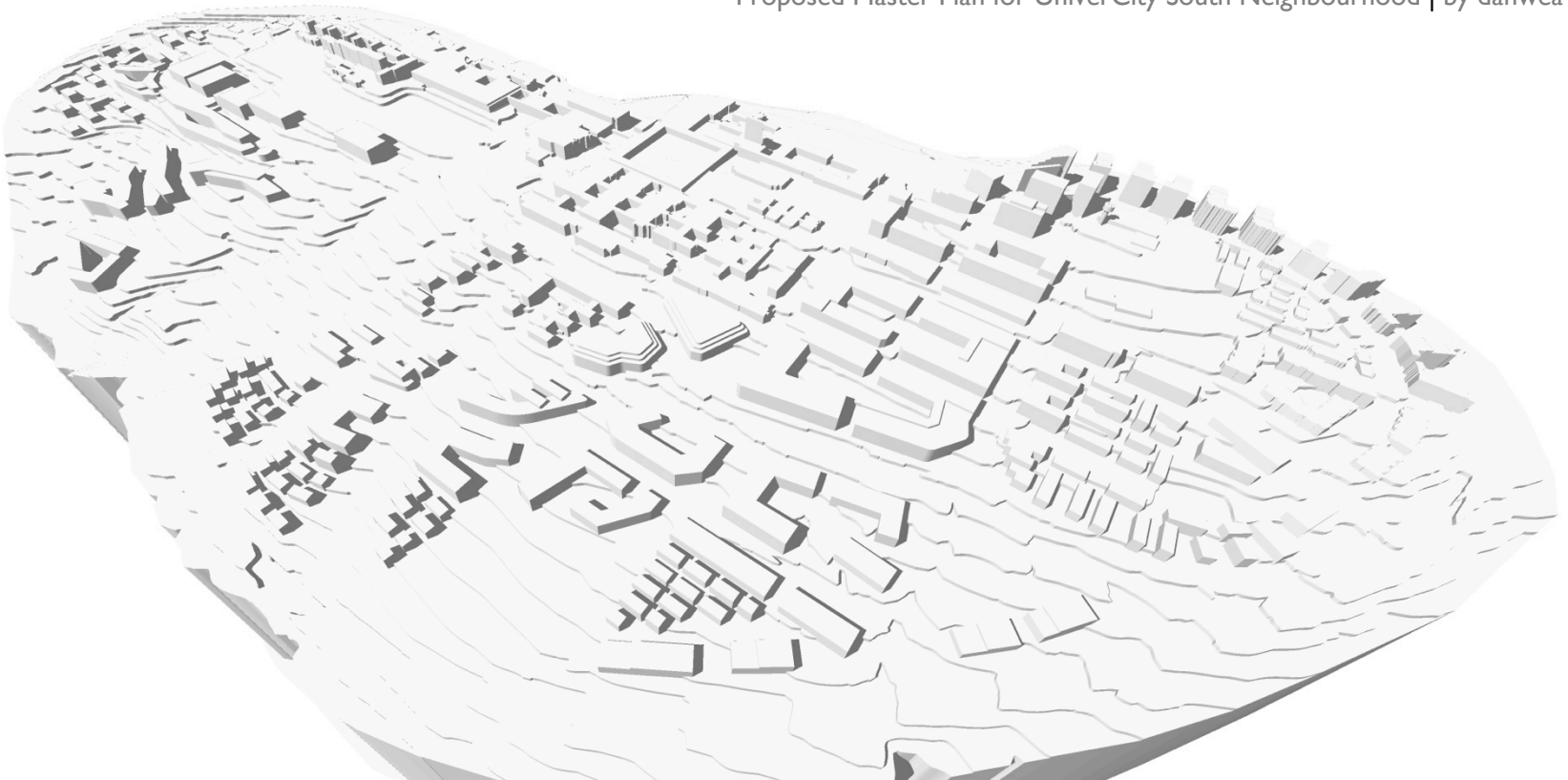


LivingCITY@SFU mountain-top campus

Proposed Master Plan for UniverCity South Neighbourhood | by dahwea (david) yan



VISION – LivingCITY@SFU

The **MASTER PLAN** - Work+Live+Play+Learn+Shop

RECIPE - 8 Key Ingredients

SUSTAINABILITY – Keeping it Fresh

Questions and Discussion

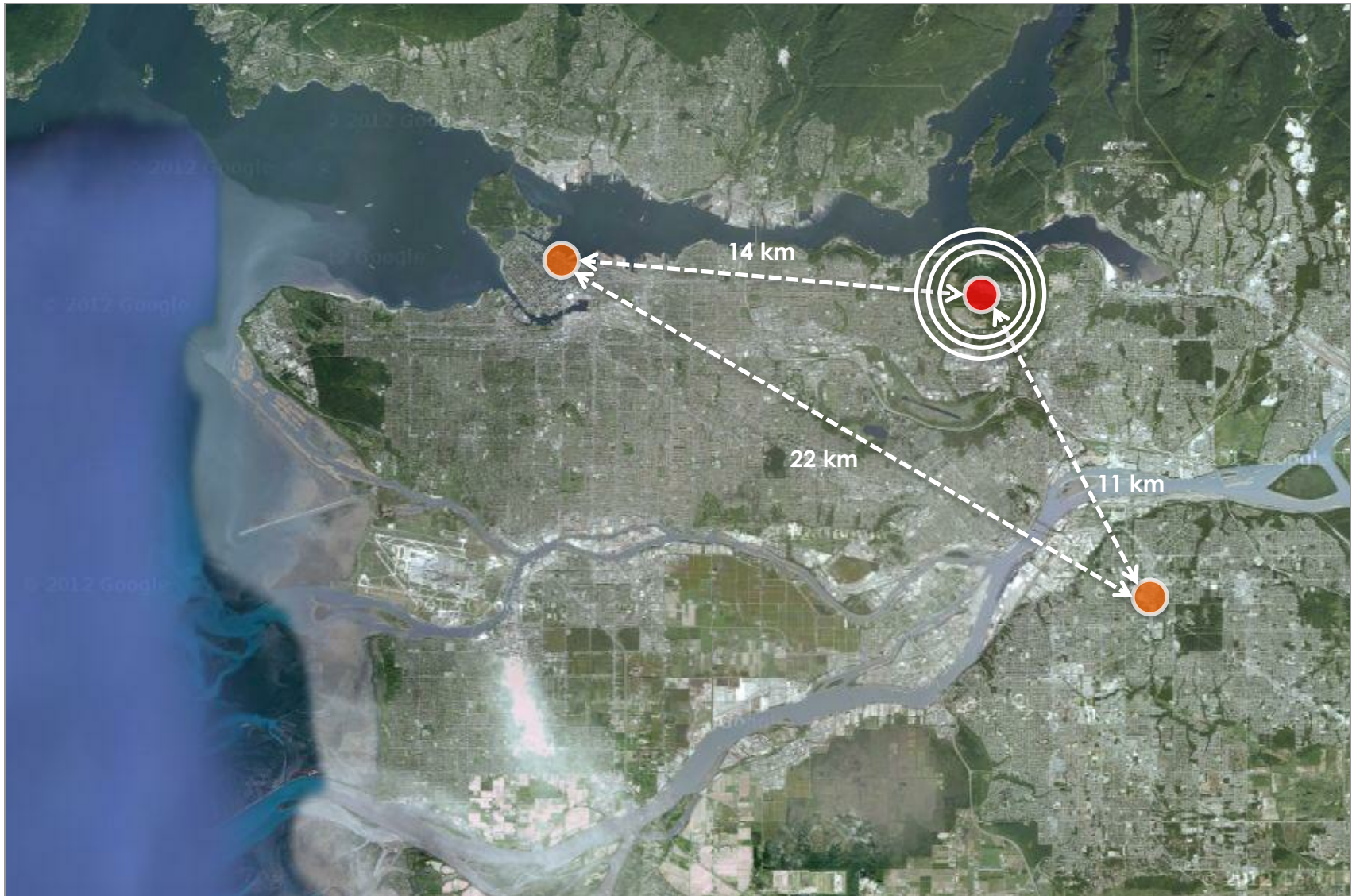
VISION – LivingCITY@SFU

The **MASTER PLAN** – 6-steps Recipe

SUSTAINABILITY – Keeping it Fresh (4 X E & Living Building Challenge)

Questions and Discussion

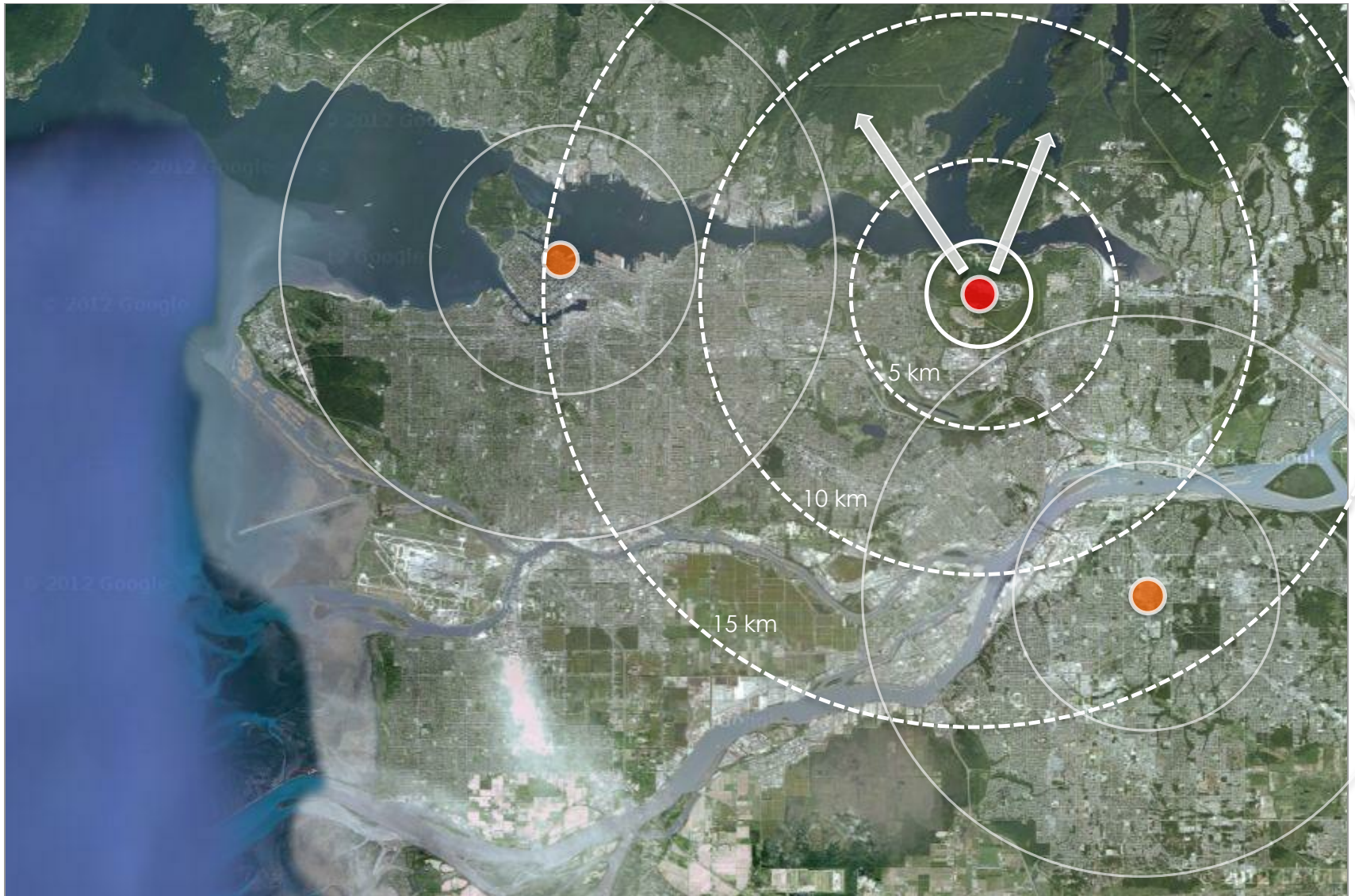
Regional context, site location



google.ca/maps?hl=en&tab=wl

1/2

Regional context, site location



google.ca/maps?hl=en&tab=wl

1/2

VISION – LivingCITY@SFU

The **MASTER PLAN** - Work+Live+Play+Learn+Shop

RECIPE - 8 Key Ingredients

SUSTAINABILITY – Keeping it Fresh

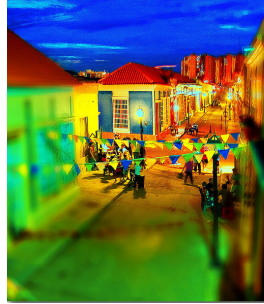
Questions and Discussion

Imagine...



LIVING NATURE

Imagine...



HAPPY STREETS

Imagine...



COMPLETE COMMUNITY



Imagine...

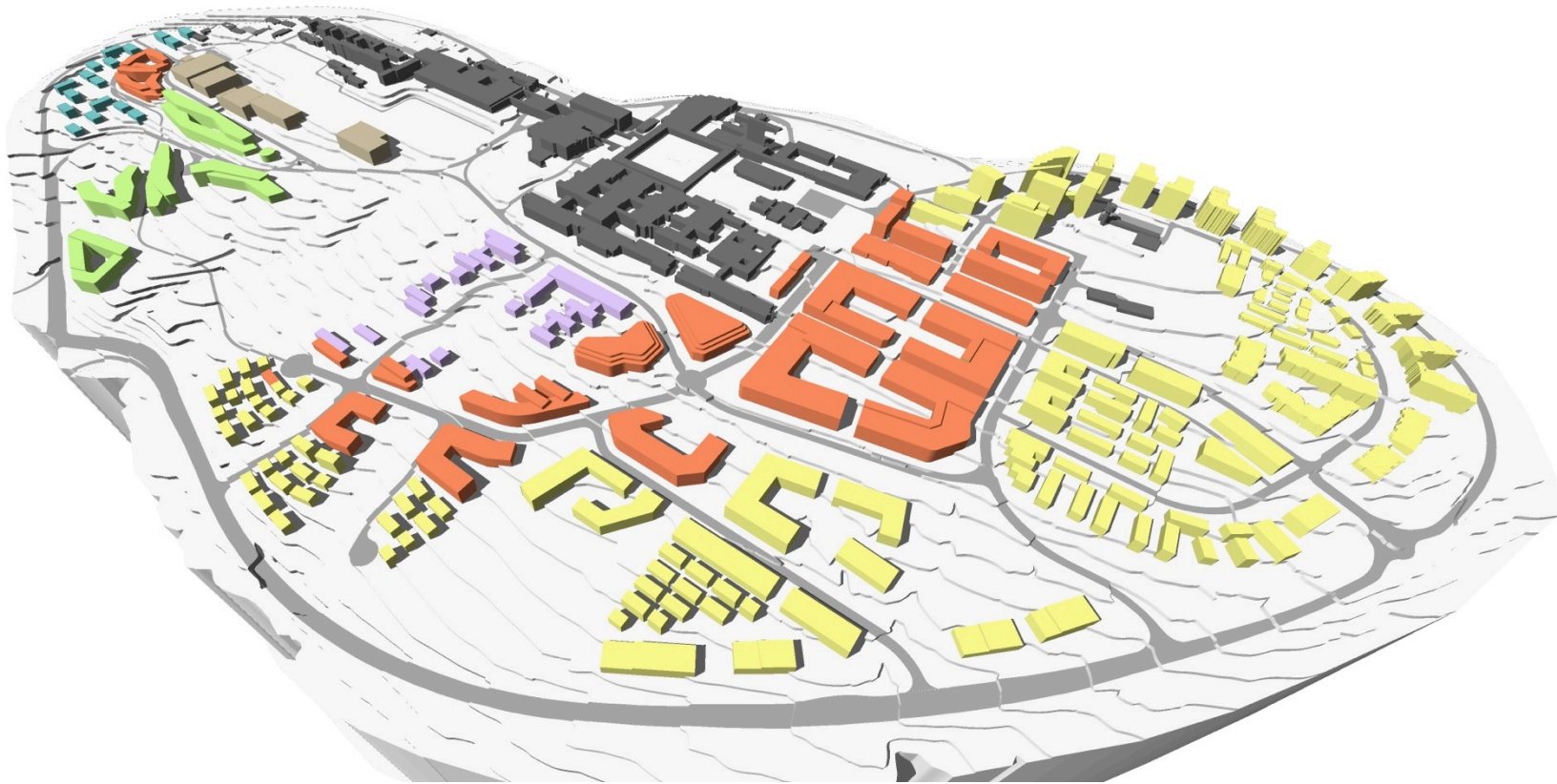


SUSTAINABLE FUTURE



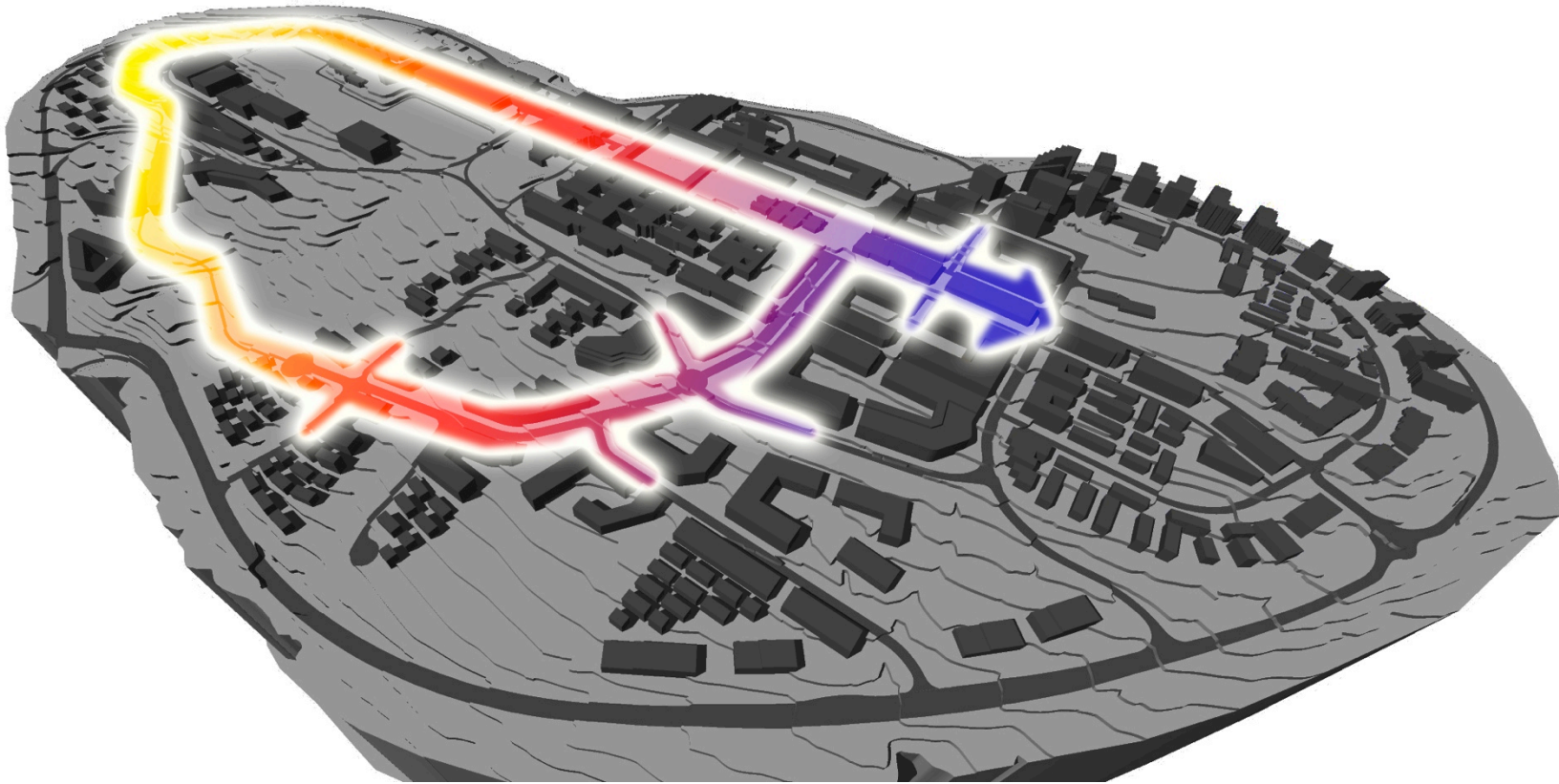
from a CAMPUS town.....to a MIX-USE COMMUNITY
from a single CIRCULATION SPINE....to a VIBRANT COMMUNITY STREET
LOOP & HUBS
from SURROUNDED by nature...to LIVING WITH nature
from great mountain VIEWS....to rich, diverse NETWORK of civic
amenities and local links
from after-school hours EXODUS...to 24/7 WORK+LIVE+PLAY+LEARN
environment
from a CAMPUS town on a mountain....to a LIVING CITY on a
mountain top
from a CAR-DEPENDENT infrastructure...to a INTEGRATED, MULTI-
PURPOSE NETWORK

from a CAMPUS town... to a MIX-USE COMMUNITY



from a single-purpose CIRCULATION SPINE....

...to a VIBRANT COMMUNITY LOOP

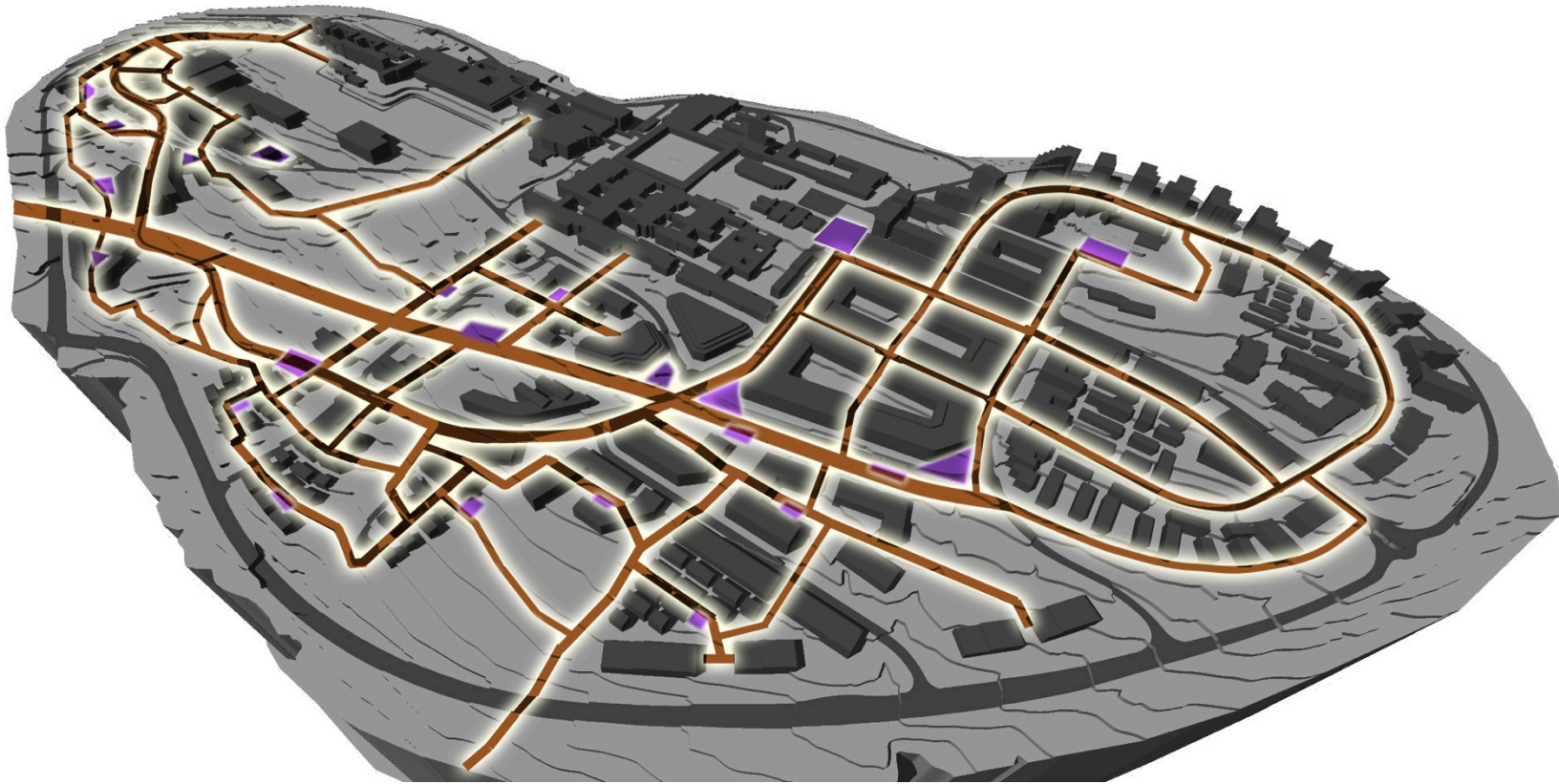


from SURROUNDED by nature... to LIVING WITH nature



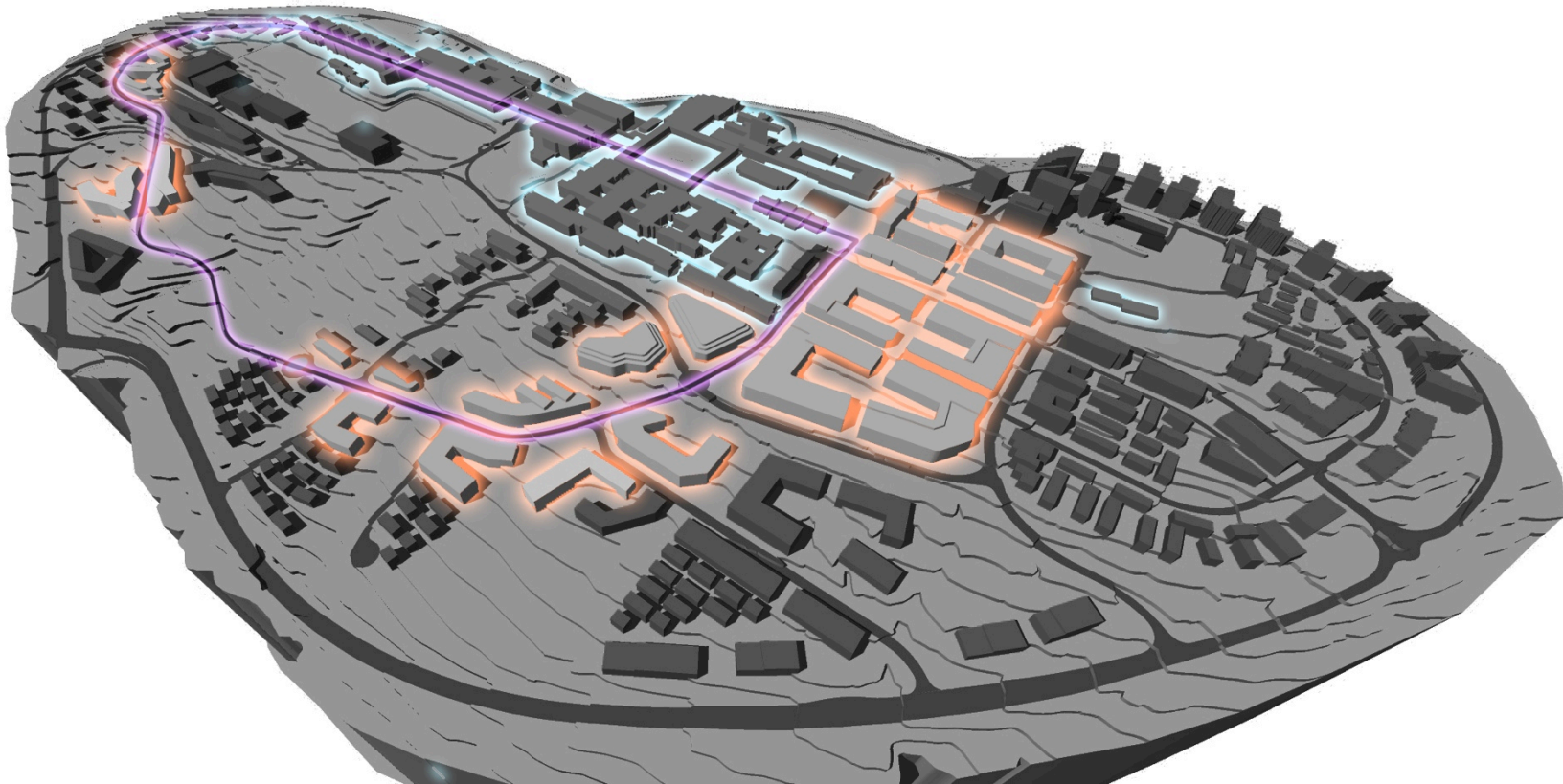
from INTERMITTENT forest trails....

...to rich, diverse NETWORK of civic amenities and local links



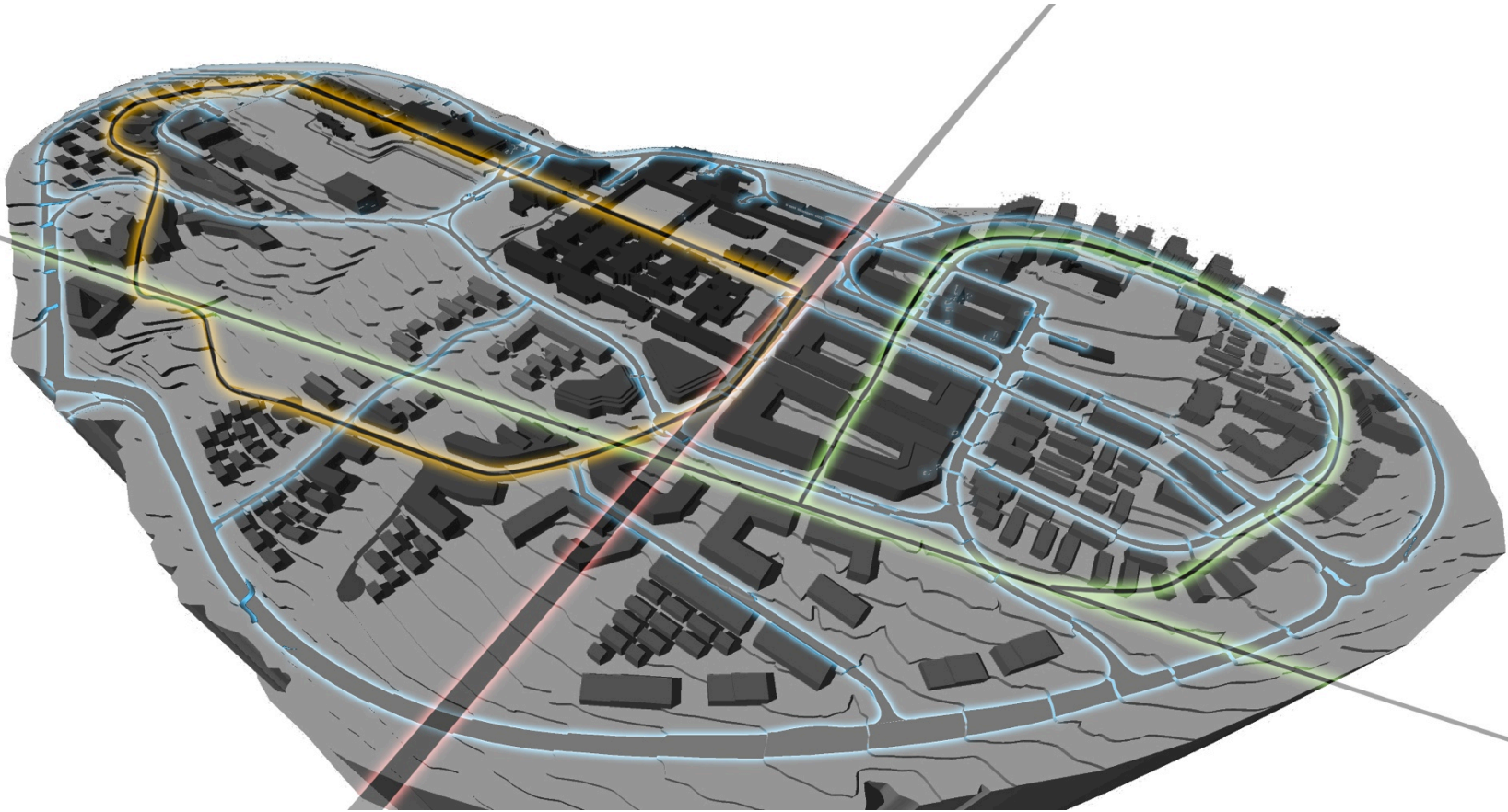
from after-school hours EXODUS...

...to a 24/7 WORK+LIVE+PLAY+LEARN environment



from a heavy CAR-DEPENDENT infrastructure...

...to a INTEGRATED, MULTI-PURPOSE NETWORK



VISION – LivingCITY@SFU

The **MASTER PLAN** - Work+Live+Play+Learn+Shop

RECIPE - 8 Key Ingredients

SUSTAINABILITY – Keeping it Fresh

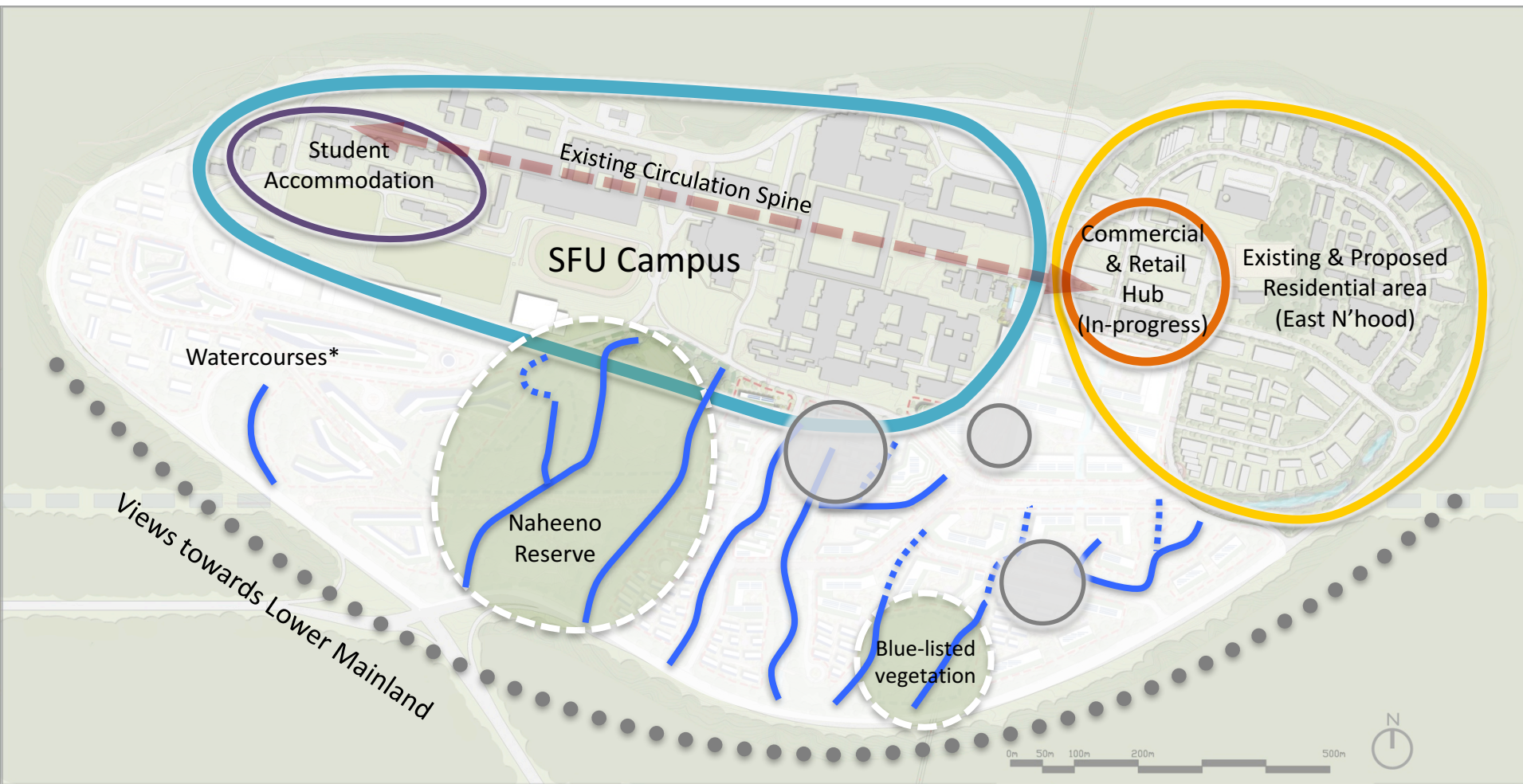
Questions and Discussion

RECIPE for SUSTAINABLE GROWTH

RECIPE : How to create a Living City

RECIPE for a Living City

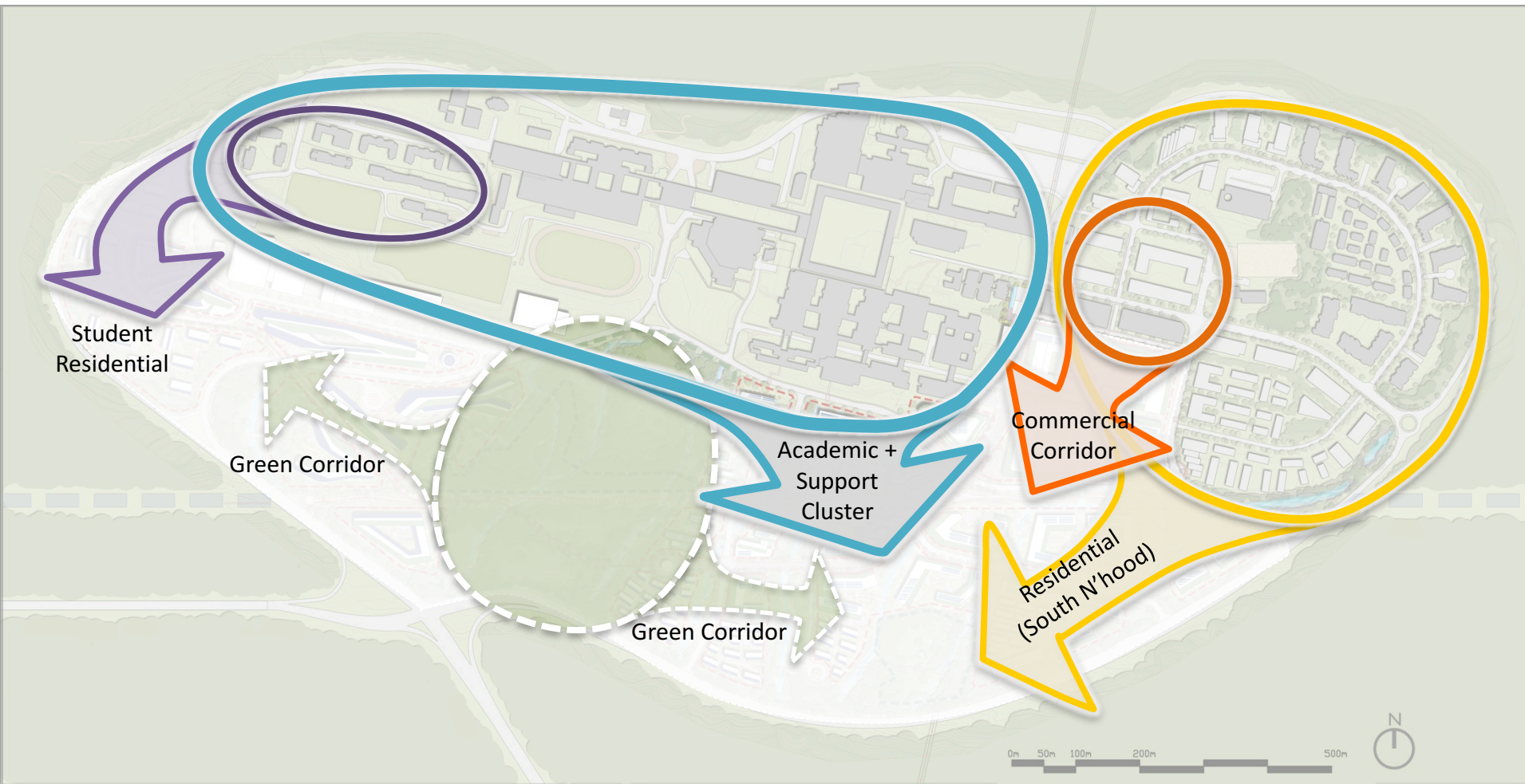
STEP 1: Build on existing CONTEXT / ASSETS



* - Based on NORR's Non-Native Watercourse Modification –Strategy 2)

○ - Existing buildings including SFU Facilities Management building, Discovery Park buildings

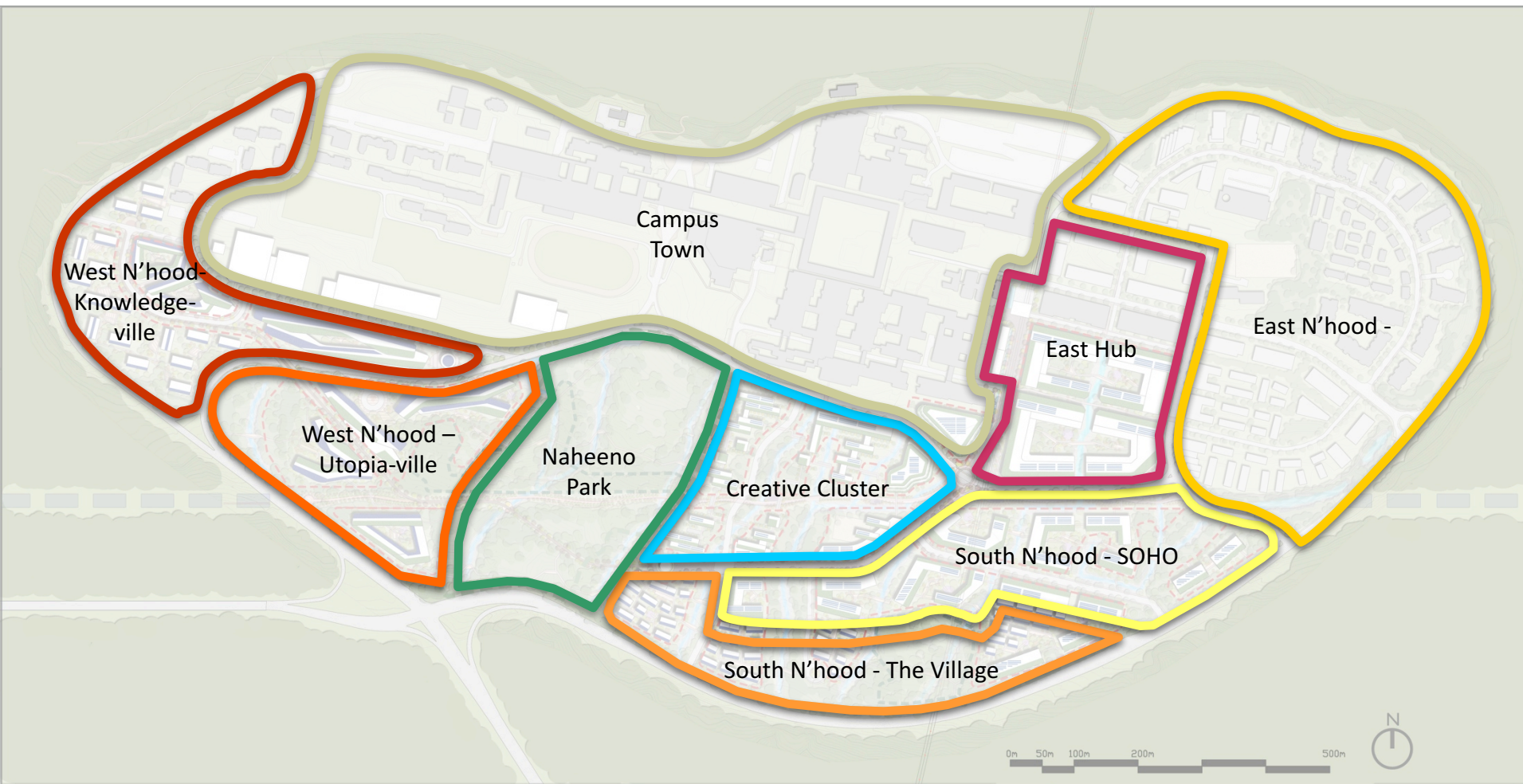
STEP 2: GROW from from existing cores



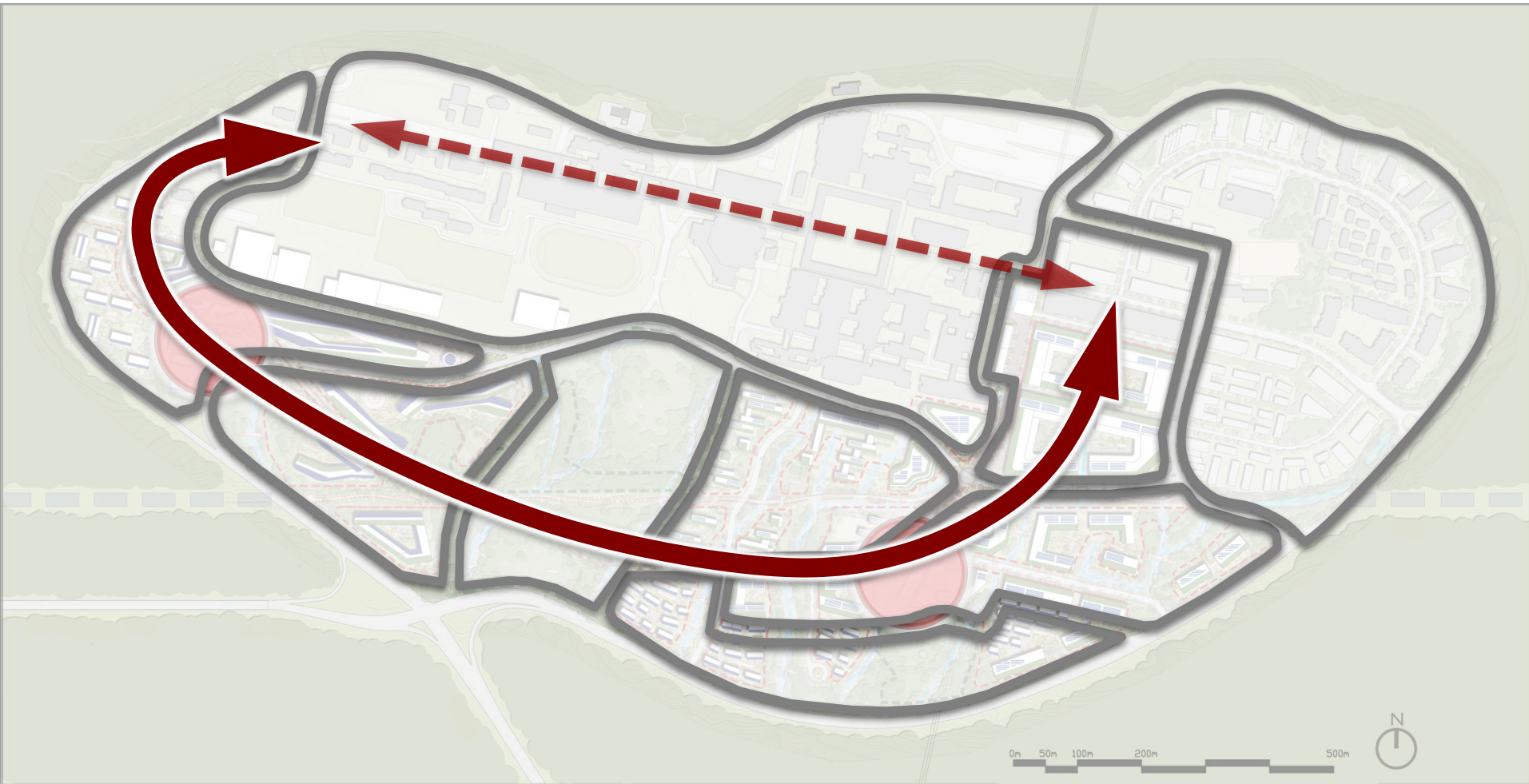
STEP 3: Create new ANCHORS



STEP 6: Diverse DISTRICTS....



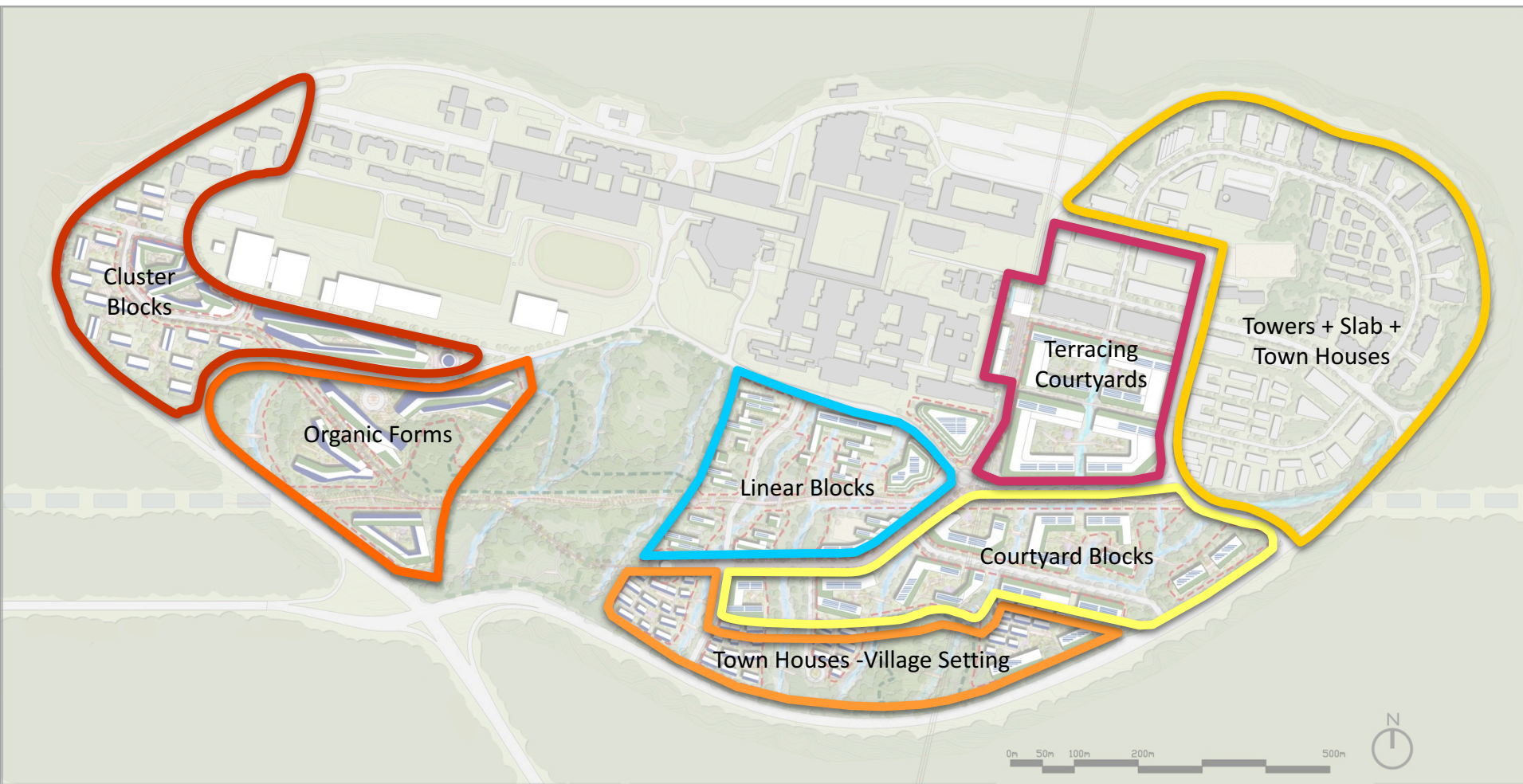
STEP 5: New SPINE to complete the Loop



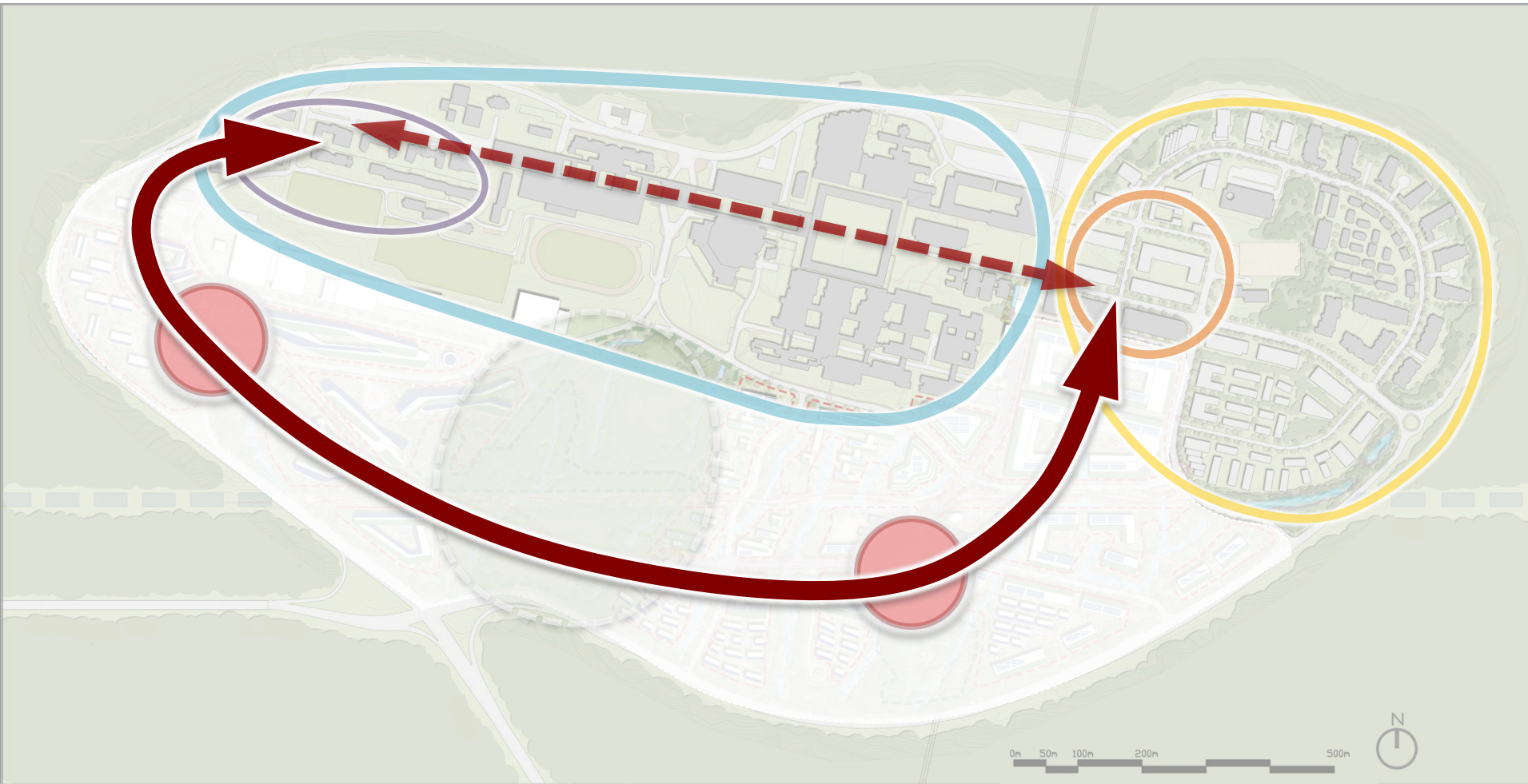
STEP 6: Reinforce GREEN & BLUE networks



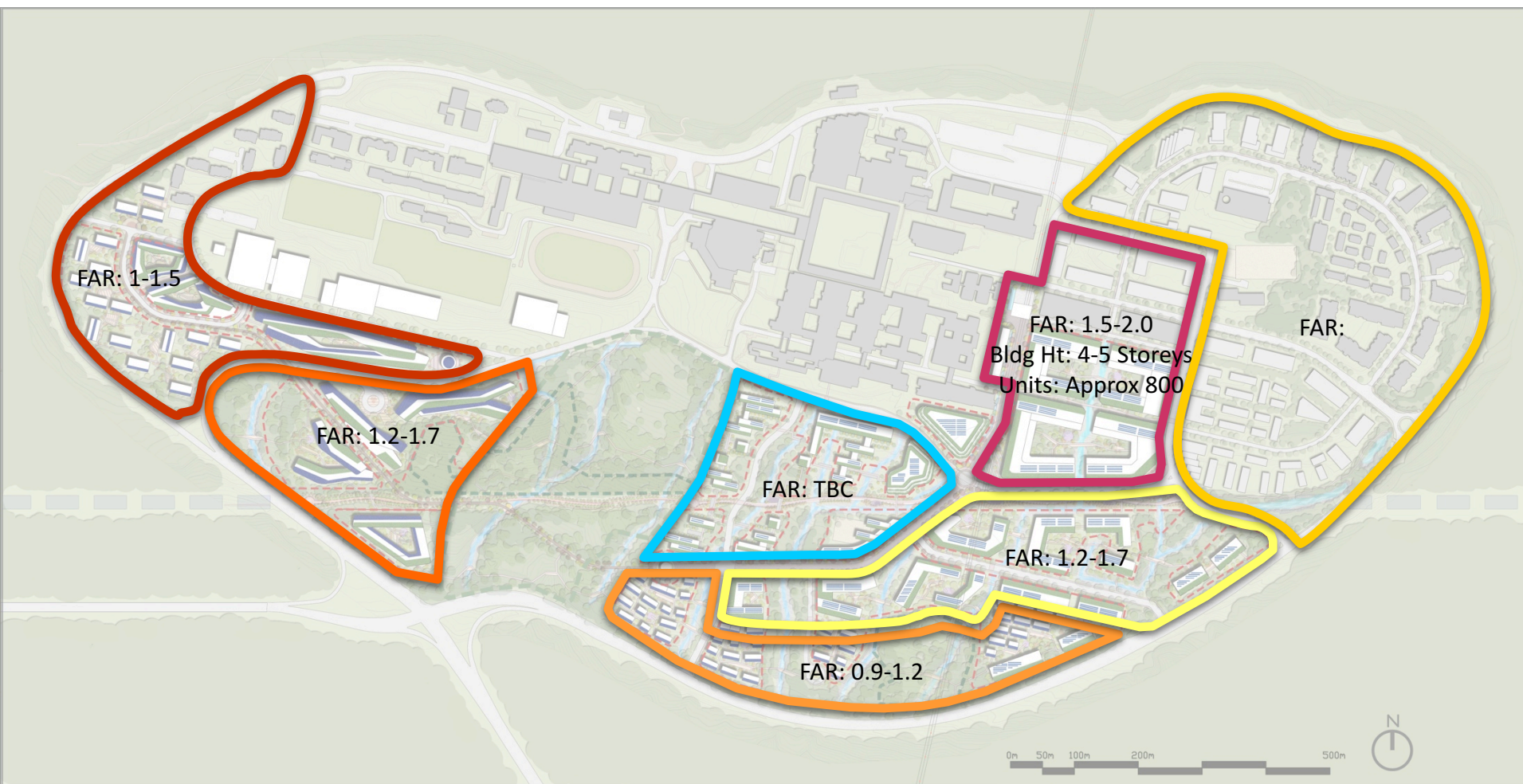
STEP 6: ...building TYPOLOGIES....



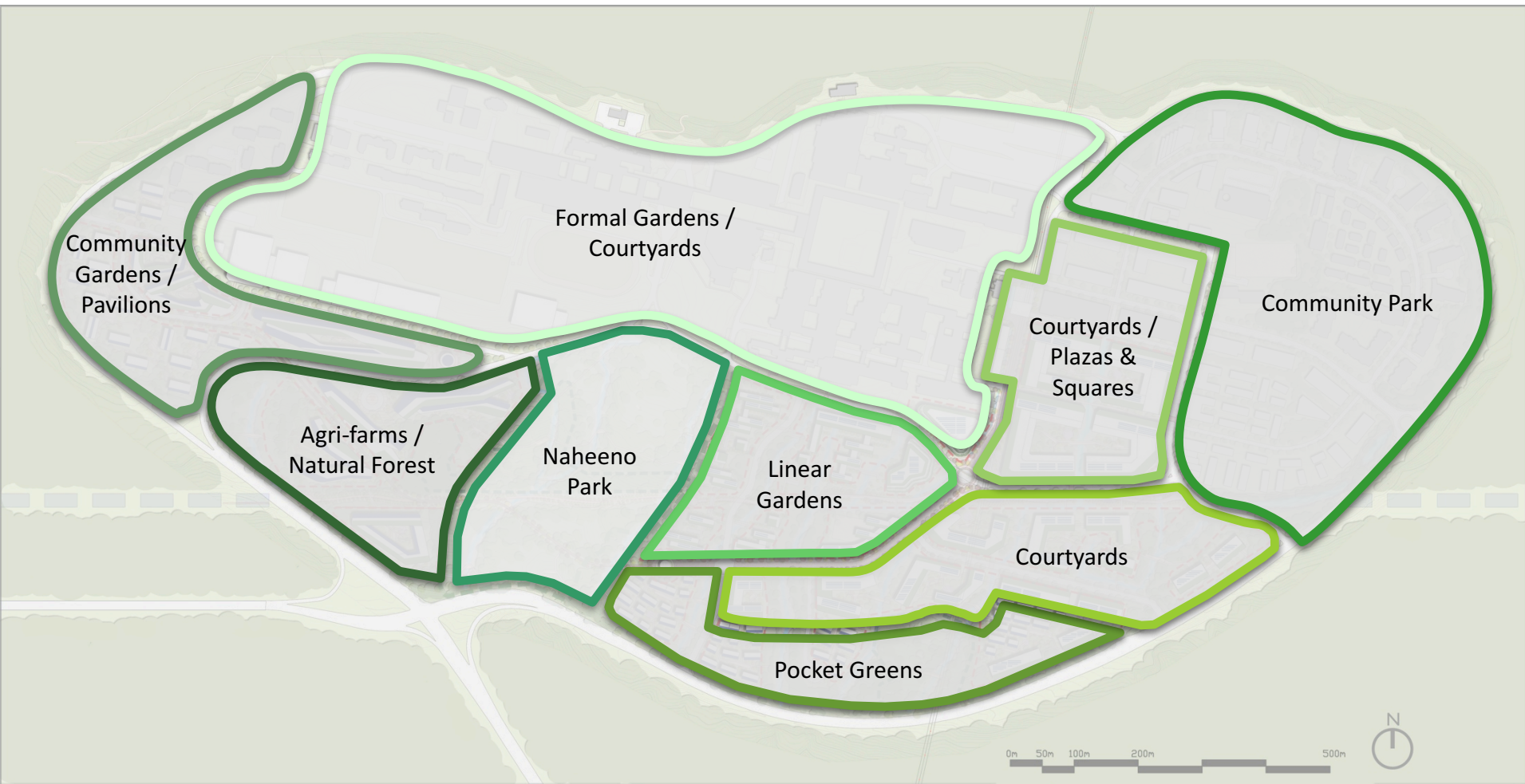
STEP 5: New SPINE to complete the Loop



STEP 6: ...DENSITIES....



STEP 6: & Landscape CHARACTERS



The MASTERPLAN



VISION – LivingCITY@SFU

The **MASTER PLAN** - Work+Live+Play+Learn+Shop

RECIPE - 8 Key Ingredients

SUSTAINABILITY – 4 X E | 7 Petals

Questions and Discussion

Environment – Limits to Growth



Environment – Urban Farming

Environment – Pedestrian Orientated

Environment – Pedestrian Orientated

Environment -



from a CAMPUS town.....to a MIX-USE COMMUNITY

from a single CIRCULATION SPINE....to a VIBRANT COMMUNITY STREET
LOOP & HUBS

from SURROUNDED by nature...to LIVING WITH nature

from great mountain VIEWS....to rich, diverse NETWORK of civic
amenities and local links

from after-school hours EXODUS...to 24/7 WORK+LIVE+PLAY+LEARN
environment

from a CAMPUS town on a mountain....to a LIVING CITY on a
mountain top

from a CAR-DEPENDENT infrastructure...to a INTEGRATED, MULTI-
PURPOSE NETWORK

A VIBRANT, SUSTAINABLE & COMPLETE COMMUNITY – LIVING**CITY@SFU**

A SNAPSHOT...The Future of LIVINGCITY@SFU

Sectional perspectives of a selection portion of the devt, showing all the combined elts of living nature, living community, living streets, living future.....

MASTERPLAN

CHARACTERISTICS of a GREAT STREET

- **Designed for pedestrian**
- **Human-scaled**
- **Suitable materials**
- **Kerbside details**
- **physical, programs, time links**
- **Solar and wind considerations**
- **At grade activities**
- **Flexible, diversity, changing character**

Recipe for Success: 6 Key Ingredients

SFU Burnaby as a piece of STEAK!

Recipe for Success: 6 Key Ingredients

SFU Burnaby as a piece of STEAK!

Mission Statement

A complete, vibrant and walkable
community which functions in synergy
with the natural and educational

A complete, vibrant and sustainable community that
environment.

What do I mean by that?

- physical, programmatic, time links
- work, live, play, learn
- Economy, ecological, equity, education cornerstones

Imagine.....
(see notes and butter paper sketches)

Principles

ENVIRONMENT

- Integrate natural features and local context
- Pedestrian scaled community with well connected greenways and paths



SOCIAL EQUITY

- Student/faculty oriented
- Family friendly
- Flexible and affordable housing options

Principles

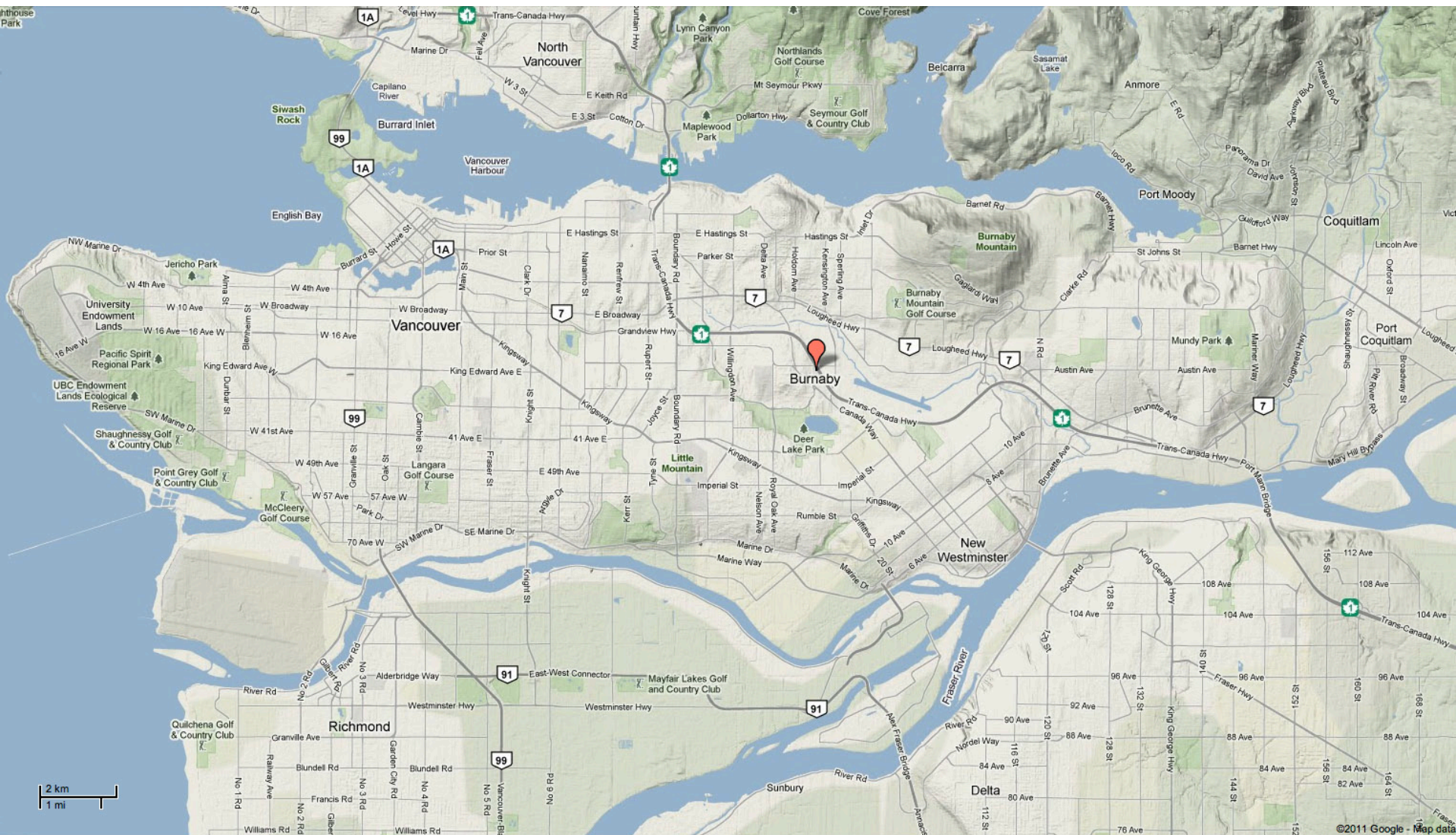
ECONOMIC VIABILITY

- Mixed-Use
- Increased diversity of retail services and entertainment options
- Housing options including flexible work/live arrangements

KNOWLEDGE INTEGRATION

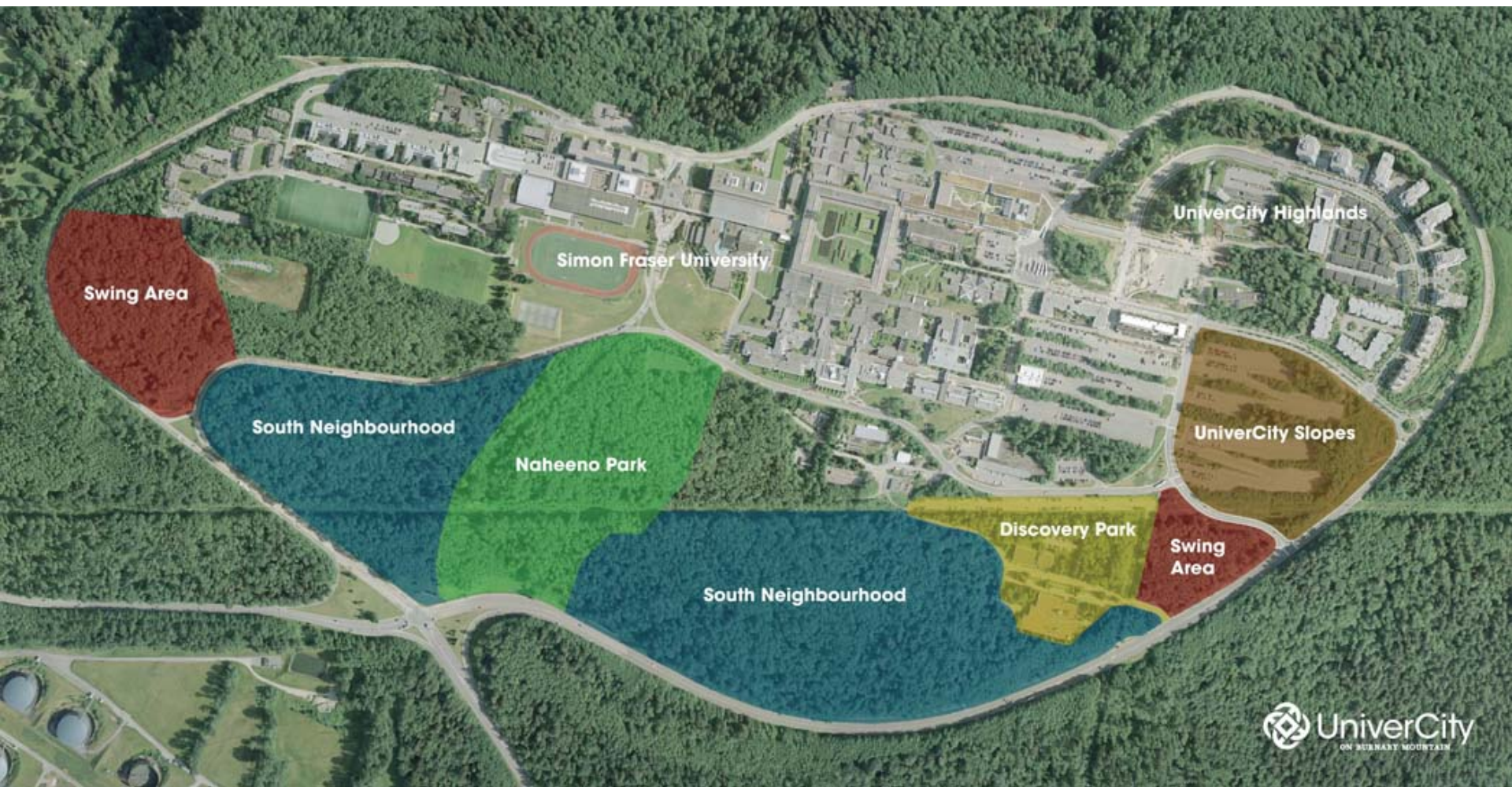
- Integration of University and community



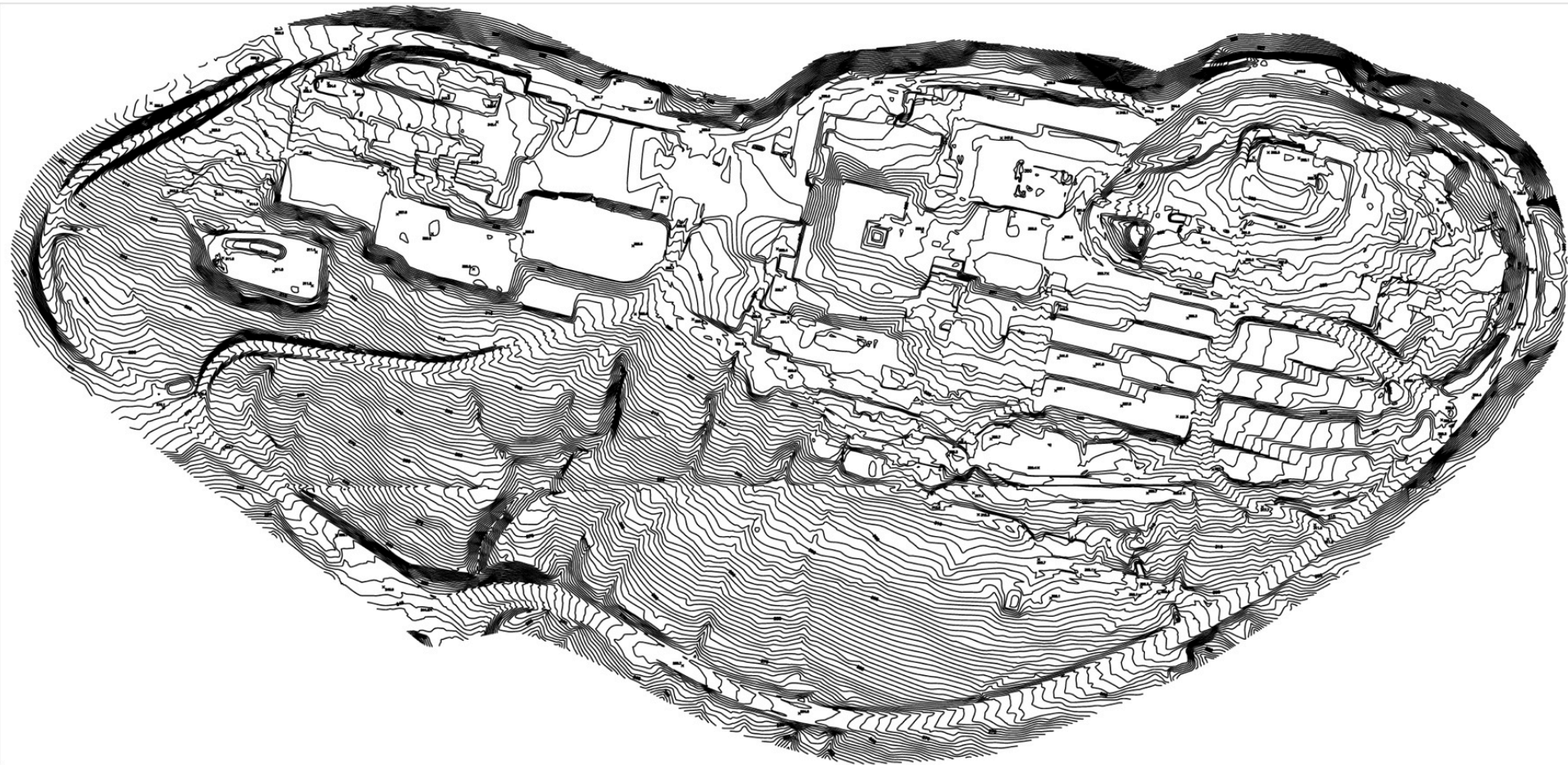


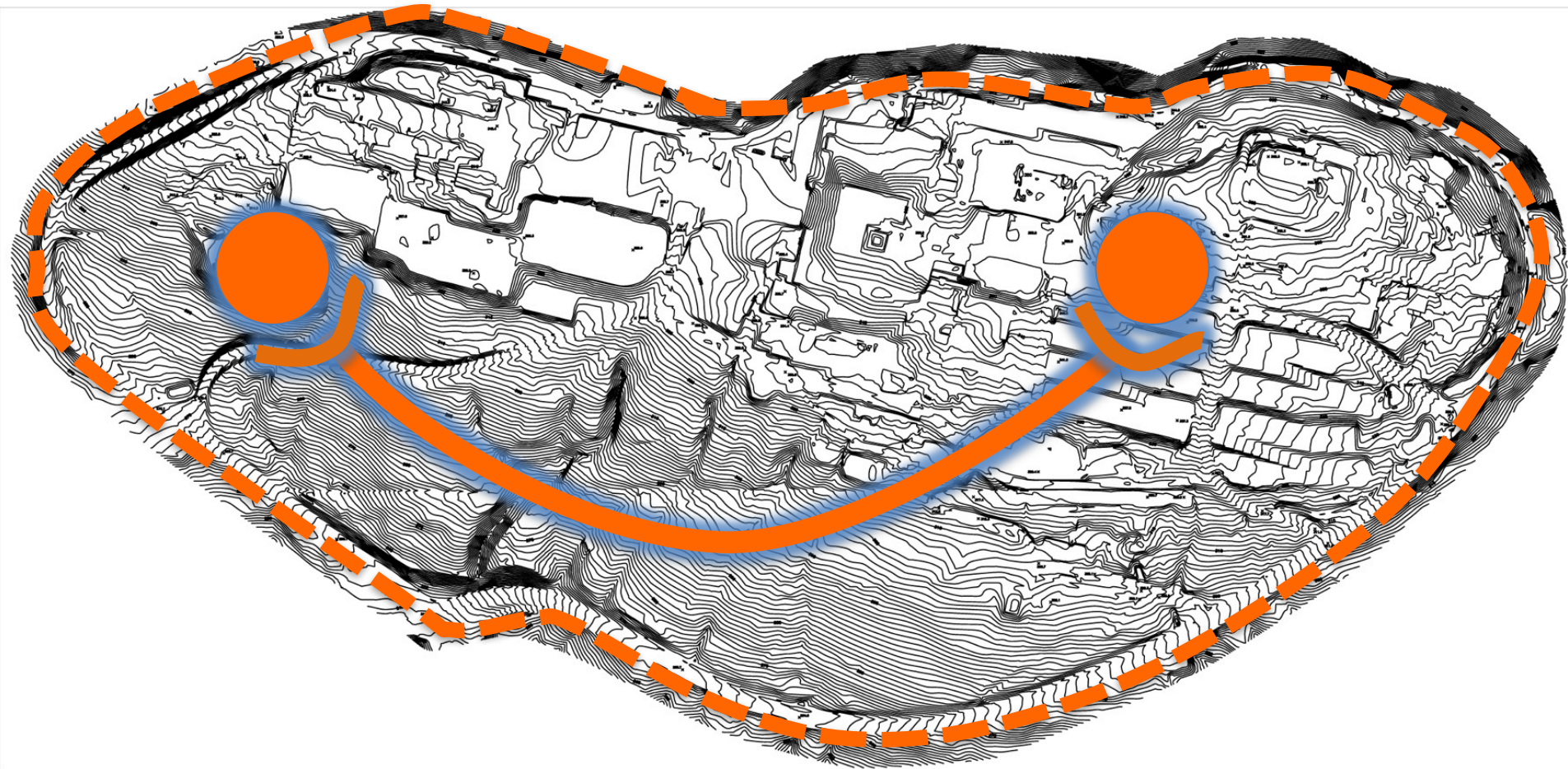












Ultimately, and in a nutshell, this is what it will look like from outer space*.... have a great weekend and HAPPY CANADA DAY!

(* - Directions: Dim all lightings within ring road, except those within the two retain/commercial hearts and the street lightings along the Festivity Spine. [LivingCITY@SFU](#) mountain-top campus

It's going to be great livingCity...b'cos it's
taken care of by a group of happy,
awesome people.....



- -targets:
- - stormwater management
- - energy efficiency
- - social equity
- - waste reduction
- - density
- - transport?

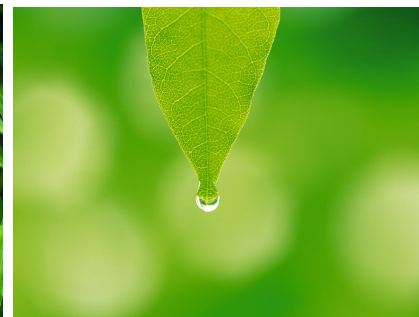
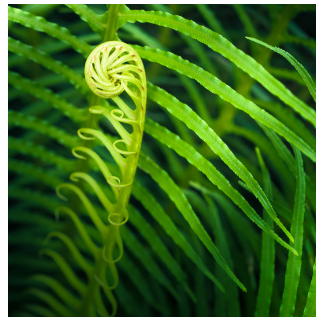
imagine

- Key demographics (age, income, who, commute patterns...)
- Social analysis (why residents like it here: refer to booklet p12-> informs the development of south neighbourhood)
- Existing development analysis (ext'g densities, Dus, resident count)
- Site analysis
 - Solar/views(city view of south n'hood vs mountain views of east n'hood)
 - Contours
 - Characters/edges/connections/place/activities
 - Existing park (preserve area) trees, watercourses
 - Transport/transit (bus, gondola)
 - SWOT analysis
 - Who are the future residents and why? (page 12 of booklet)

IMAGINE....1.,2.,3.,4.....

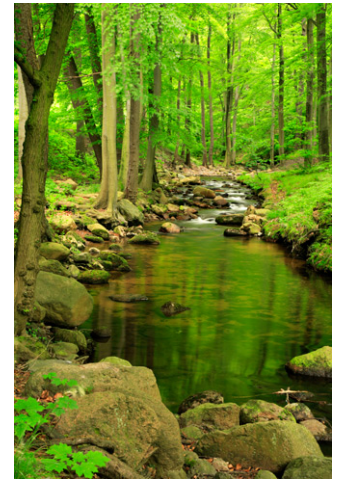
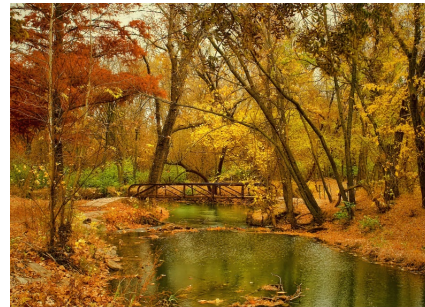
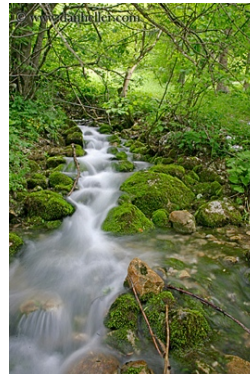
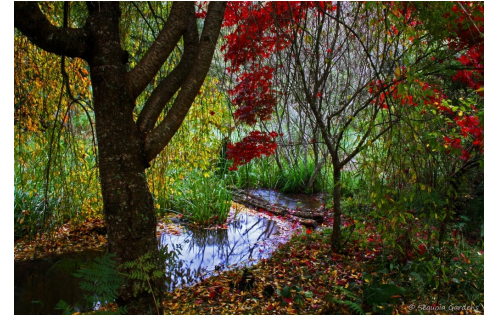
- Transport Masterplan
 - Public transit (ie. External: Bus , gondola etc.; Internal: bike, buggy, segway, rollerblade)
 - Bicycle and pedestrian (+ even personal mobile devices ie. Segway, buggy?)
- Land-use pattern
- Overall masterplan
 - OVERALL CONCEPT & STRUCTURE
 - - DEVELOPMENT MASSING & FORM: design density
 - BROAD ZONING/STRUCTURE (main axis, secondary axis, main spine, green spine, entrance, exit, public nodes, transit nodes, commercial nodes, commercial spine etc.....)
 - - ZONING: commercial/retail services (*important as this address residents feedback on lack of shops and services, the convenience factor, and to demonstrate how south neighbourhood's commercial green spine can link up with existing high street & cornerstone commercial spaces
 - - ZONING: community/institution services
 - - CIRCULATION: veh / ped / bike circulation plan + service access
 - - ENV PROTECTION & INTEGRATION: (topo, watercourse, trees, wildlife)
 - - VIEWS:study (how it looks like from below the mountain)
 - - ZONING: public/semi public/private analysis
- Phasing plan
- -sections of green spine/diagrams, sketch up of green commercial spine, courtyard
- Layers in exploded axometric view – slope, green spine, commercial spine, residential blocks, courtyard, nature (bioswales, forest natural setting)

Imagine...



LIVING NATURE

Imagine...LIVING NATURE



Imagine...LIVING STREETS



Imagine...LIVING COMMUNITY



Imagine...LIVING FUTURE

